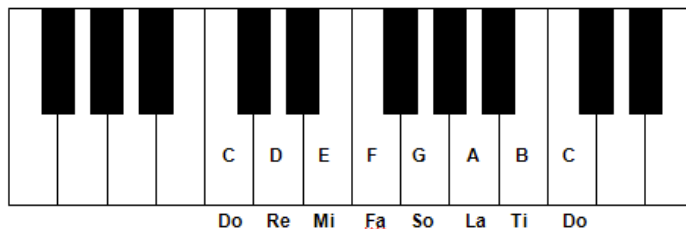


★ ★ ★ 🎸 ★ ★ ★

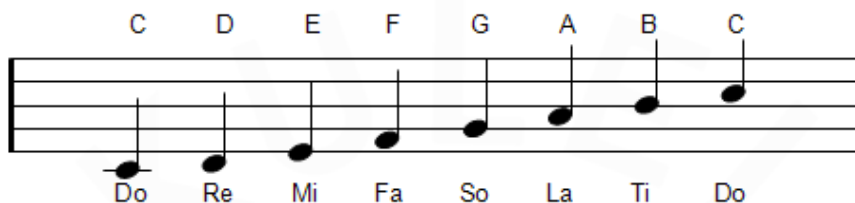
# C MAJOR SCALE

The scale of C major is the only major scale with no # (sharp) or b (flat) notes.

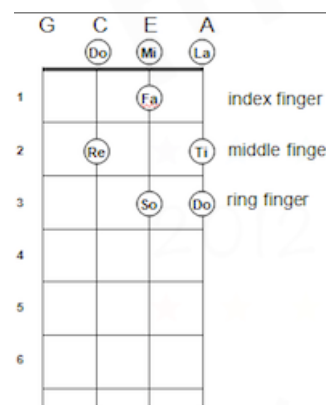
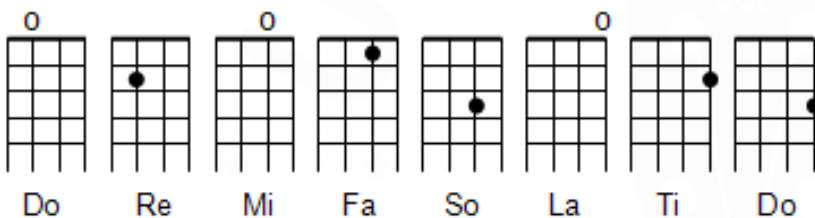
\* On a piano, it would consist of only white keys and look like this:



As musical notation on a staff it would look like this:



Placed in ukulele chord boxes the notes would look like this: On the Ukulele fretboard like this:

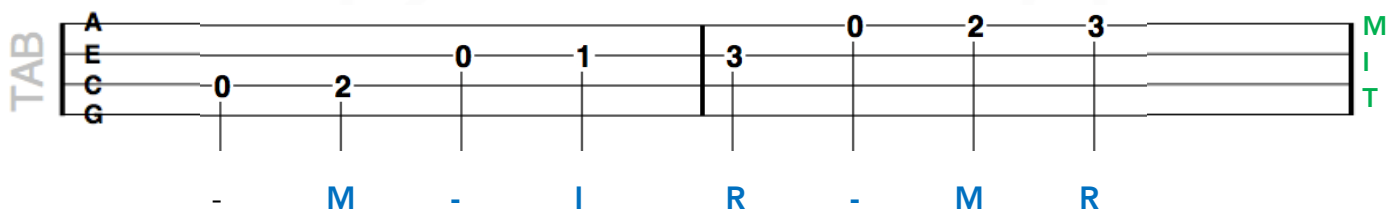


### FINGER CHART:

- I = Index Finger
- M = Middle finger
- R = Ring finger
- T = Thumb



Here is the C Major scale written in TAB form. The letters below each note represent what finger to fret with. The letters to the right of the tab represent which fingers to pluck with.



**PRACTICE:** Try playing the scale of C major as often as you can on your ukulele both up the scale and back down to develop essential muscle memory for melody picking. Try different speeds starting off around 60BPM and gradually building up to 120BPM.