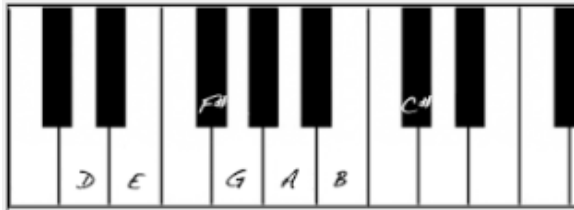


★ ★ ★ ★ ★ ★  
D MAJOR SCALE

The scale of D major is the only major scale with 2 x # sharp notes as follows:

<u>1</u>	<u>2</u>	<u>3</u>	<u>4</u>	<u>5</u>	<u>6</u>	<u>7</u>	<u>8</u>
D	E	F#	G	A	B	C#	D

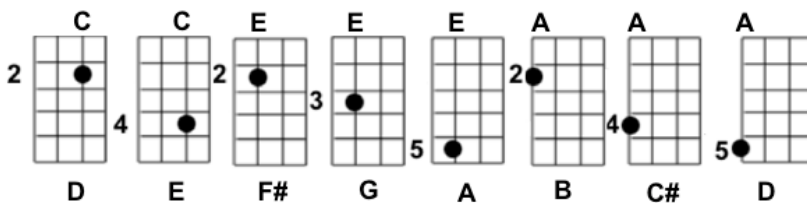
\* On a piano the scale would look like this:



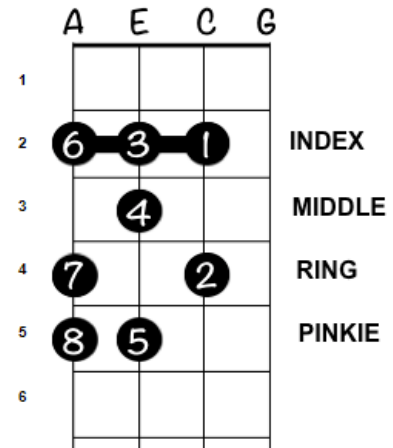
\* As musical notation on a staff it would look like this:



\* As ukulele box positions diagrams like this:

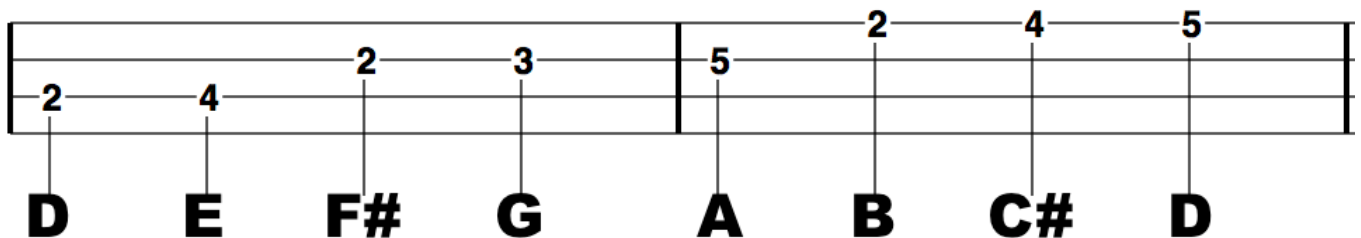


\* On the Ukulele fret board like this:



## D MAJOR SCALE TAB:

**BARRED POSITION:** This is the same pattern as the C Major scale, except now you have shifted the complete scale pattern up two frets. Use your index to bar fret number 2 and the rest of your fingers to play through the D major scale notes as position on the fretboard diagram above. Once you get used to it and fix any buzz notes or deadened notes, try it backwards too.



**OPEN POSITION:** You can still play the D major scale using some open notes so see the tab below for an alternative way to play the scale, although practising in the Barred position will help develop strength and independence with your fretting hand, which will help with those barred chords.

