



# KARMA CHAMELEON

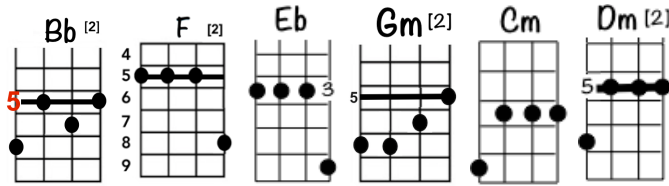
[CULTURE CLUB, 1983]

KEY: Bb

TIME: 4/4

TEMPO: 150 BPM

RHYTHM: Calypso/Chuck  
Single Strums / Rhythmic



Calypso

1 + 2 + 3 + 4 +  
↓ ↓ ↑ ↓ ↓ ↑

Chuck

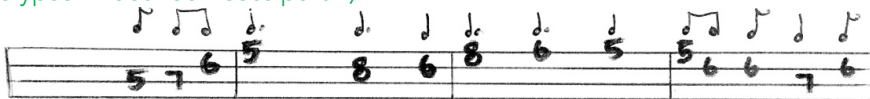
1 + 2 + 3 + 4 +  
↓ X ↑ ↑ X ↑

Double

1 e + a 2 e + a 3 e + a 4 e + a  
↓ ↓ ↓ ↑ ↑ ↓ ↓ ↓ ↑

INT. (Rhythmic Calypso in between bass part 1)

BLUES HARP:



V1. (Calypso) There's a [Bb] loving in your [F] eyes all the [Bb] way  
If I [Bb] listen to your [F] lies would you [Bb] say  
I'm a [Eb] man without con-[F]-viction  
I'm a [Eb] man who doesn't [F] know  
How to [Eb] sell a contra-[F]-diction  
You come and [Eb] go, you come and [Gm] go-oo [F↓] oh

CH. (Chuck) [Bb] Karma, karma, karma, karma [F] karma chamele-[Gm]-on  
You come and [Cm] go, you come and [Bb] go-oo [F] oh  
[Bb] Loving would be easy if your [F] colours were like my [Gm] dream  
Red gold and [Cm] green, red gold and [Bb] gree-[F↓]-een

V2. (Calypso) Didn't [Bb] hear your wicked [F] words every [Bb] day  
And you [Bb] used to be so [F] sweet I heard you [Bb] say  
That my [Eb] love was an ad-[F]-diction  
When we [Eb] cling our love is [F] strong  
When you [Eb] go, you're gone for [F] ever  
You string a-[Eb]-long, you string a-[Gm]-looo-[F↓]-ong

CH. [As Above]

BR. (Double) [Eb] Every day is like sur-[Dm]-vival (*survival*) [Eb] You're my lover not my [Gm] rival  
[Eb] Every day, is like sur-[Dm]-vival (*survival*), [Eb] You're my lover, not my ri-[Gm]-[F]-val

CH. (Chuck) [Bb] Karma, karma, karma, karma [F] karma chamele-[Gm]-on  
You come and [Cm] go, you come and [Bb] go-oo [F] oh  
[Bb] Loving would be easy if your [F] colours were like my [Gm] dream  
Red gold and [Cm] green, red gold and [Bb] gree-[F]-een

OUT. (Rhythmic Calypso) Karma, karma, karma, karma, karma chameleon

You come and go, you come and go-oo oh

(Chuck) [Bb] Loving would be easy if your [F] colours were like my [Gm] dream  
Red gold and [Cm] green, red gold and [Bb] gree-[F]-een [Bb↓]