



SWEET CHILD O MINE

[Guns N Roses, 1987]



Chorus Chords

INT. RIFF / SOLO

V1: [CHUCK STRUM] [C] She's got a smile that it seems to me
Re-[Bb]-minds me of childhood, memories
When [F] ever-y-thing was as fresh as the bright blue [C Riff] sky

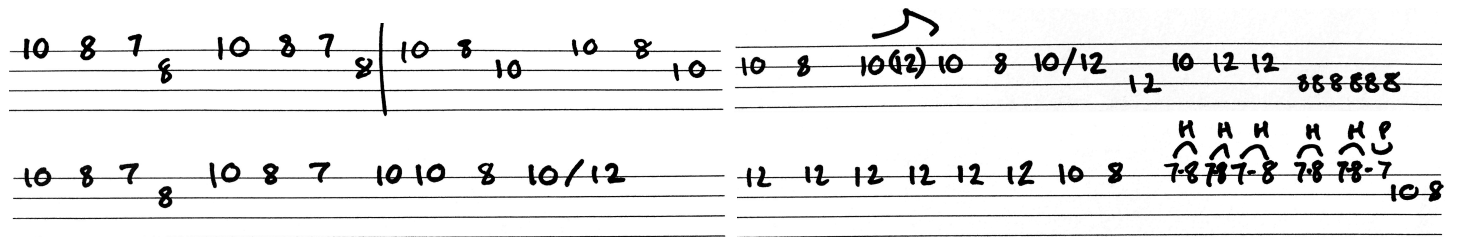
V2. [C] Now and then when I see her face, she [Bb] takes me away to that special place
And if I'd [F] stare too long, I'd probably break down and [C Riff] cry

CH. [G] Wooooa woooo [F] woah, Sweet child o' [C] mine
[G] Oh Oh Oh [F] Oh, Sweet love of [C Riff] mine

V3. [C] She's got eyes of the bluest skies, as [Bb] if they thought of rain
I [F] hate to look into those eyes and [C] see an ounce of pain

V4. Her [C] hair reminds me of a warm safe place where, [Bb] as a child I'd hide
And [F] pray for the thunder and the rain to [C] quietly pass me by [C]

CH/SOLO. [G] Wooooa woooo [F] woah, Sweet child o' [C Riff] mine
[G] Oh Oh Oh [F] Oh, Sweet love of [C Riff] mine (into solo...)



CH. [G] Wooooa woooo [F] woah, Sweet child o' [C Riff] mine
[G] Oh Oh Oh [F] Oh, Sweet love of [C Riff] mine x2

OUTRO: [Single Strums] [G] [F] [C Riff] [G] [F] [C End Riff]



SWEET CHILD O MINE - INTRO SOLO

This part comes in after the first 8 bar round with just the main riff and picks up just before bar 9 as illustrated below:

The first system covers bars 9, 10, 11, and 12. The second system covers bars 13, 14, 15, and 16. Fret numbers are indicated below the strings in green.

The main riff recap:

The diagram shows fretboard positions for bars 1 through 16. Bars 1-8 are identical. Bars 9-15 show a variation with a 2 on the G string in bar 9. Bar 16 shows a more complex variation with frets 5, 3, 5, 7 on the G string.

Low end Solo recap:

The low end solo is written across four staves. Chord symbols (C, F, Bb) are written above the staves. The notation includes triplets, slurs, and various note values.